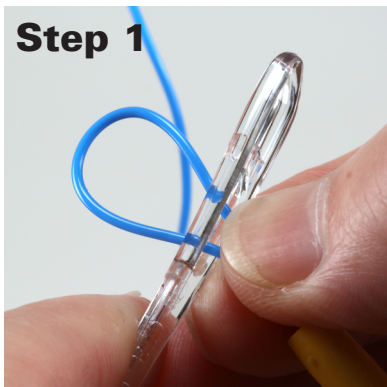




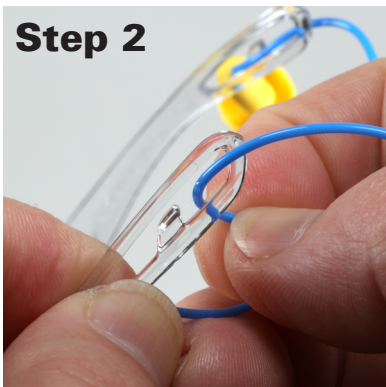
CL4 ERT Cord Insertion Instructions

Step 1



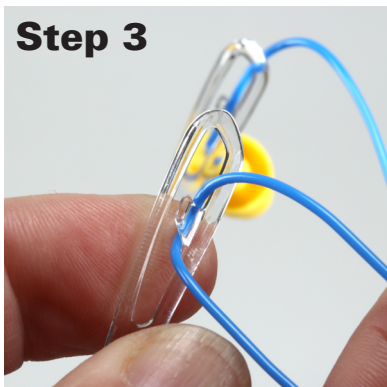
Loop earplug cord and insert through outer side of forward hole on temple.

Step 2



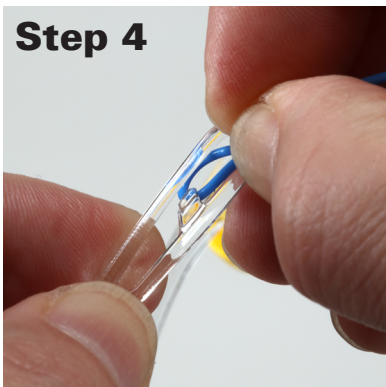
Pull long end of earplug cord over the ERT riser to the rear hole on temple.

Step 3



Position earplug cord under ERT riser with ear plug to the front and cord loop to the back.

Step 4



To remove: Pull the earplug end of the cord over the ERT riser to the rear hole. Pull the cord loop out of the temple.