

FR CLOTHING

POWERED BY

Summit Breeze[®]

TECHNOLOGY



MCR SAFETY

WE PROTECT PEOPLE



FR CLOTHING

POWERED BY

Summit Breeze®

TECHNOLOGY

CAT 2

THE FIRST OF ITS KIND

IN FLAME-RESISTANT APPAREL TECHNOLOGY

PATENTED TRIPLE VENT TECHNOLOGY

REDUCES BODY BURN UPTO 50%*

*IN IDENTICAL FABRICS OF A STANDARD DESIGN

DUAL RATED

NFPA 70E CAT 2 & NFPA 2112

DESIGNED TO MAXIMIZE AIR FLOW

IMPROVING CONVECTION AND EVAPORATIVE COOLING

INHALATION INJURY INCREASES THE DEATH RATE

16X*

*SOURCE - NATIONAL BURN REPOSITORY

SUMMIT BREEZE® TECHNOLOGY DIRECTS MOST OF THE OFF-GAS AWAY FROM THE FACE

SEVERELY REDUCING INHALATION INJURY

OEKO-TEX® RATED FABRICS
INSPIRING CONFIDENCE

NO FORMALDEHYDE PRESENT IN FIBERS



FR MESH BACK VENT



UNDERARM VENTS

5.5 OZ RIPSTOP FR INHERENT BLEND

PROVIDING EXTREME MOISTURE WICKING AND ANTI-STATIC PROPERTIES



RIPSTOP REINFORCEMENT



WHEN QUALITY COULD BE THE DIFFERENCE IN LIFE OR DEATH

DON'T SETTLE FOR ANYTHING LESS THAN THE BEST



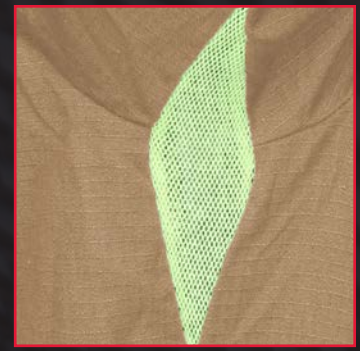
PATENTED Vented FR Protection

FR Vented Back Button Front Shirt

Features:

- Banded Button Down Collar
- 2 Double Needle Top Stitched Pockets with Flap and Button Closure
- Double Needle Stitching Throughout
- True 2 Piece Front Placket
- 2 Button Cuff
- Ripstop Material
- UL Certified to NFPA 2112
- CAT: 2

CAT 2



Underarm Vents



FR Mesh Back Vent



Button-Down Collar



2 Chest Pockets



Front Pen Pocket



Double Stitching

Sizes	Regular	S-4X
	Tall	M-4X

Shirt Part #	Color	Inherent Blend	100% Cotton	7 oz.	5.5oz	Rip-stop	ATPV
SBS1001	Gray	X			X	X	8.9 cal/cm2
SBS1002	Navy	X			X	X	8.9 cal/cm2
SBS1003	Tan	X			X	X	8.9 cal/cm2
SBS2001	Gray		X	X			8.7 cal/cm2
SBS2002	Navy		X	X			8.7 cal/cm2



PATENTED Vented FR Protection

FR Vented Back Coverall

Features:

- Ventilated Rear Cape with FR Mesh
- FR Mesh Under Arm Ventilation
- 2 Chest Pockets with Zipper Closure
- Double Stitched
- 2 Front Inset Pockets
- Concealed Hook and Loop Closure Pass-Thru Pocket
- 2 Rear Patch Pockets
- Tool Pocket on Right Leg
- Pencil Pocket in Left Sleeve
- Mesh Gas Monitor Holder
- Standard Design has 1" Reflective Striping Around Arms and Legs
- NFPA 70E and 2112 Compliant
- CAT: 2

**CAT
2**



FR Mesh Back Vent



Underarm Vents



Stand-up Collar Option



Mesh Gas Monitor Pocket



Zipped Chest Pocket



Tool Pocket

Sizes	Regular	38-64
	Tall	38-60

Coverall Part #	Color	Inherent Blend	100% Cotton	7 oz.	5.5 oz.	Rip-stop	ATPV	1" Reflectivity	3" Triple Trim Reflectivity
SBC1011	Gray	X			X	X	8.9 cal/cm2	X	
SBC1012	Navy	X			X	X	8.9 cal/cm2	X	
SBC1013	Tan	X			X	X	8.9 cal/cm2	X	
SBC1031	Gray	X			X	X	8.9 cal/cm2		X
SBC1032	Navy	X			X	X	8.9 cal/cm2		X
SBC1033	Tan	X			X	X	8.9 cal/cm2		X
SBC2011	Gray		X	X			8.7 cal/cm2	X	
SBC2012	Navy		X	X			8.7 cal/cm2	X	
SBC2013	Tan		X	X			8.7 cal/cm2	X	
SBC2014	Red		X	X			8.7 cal/cm2	X	
SBC2015	Ryl. Blue		X	X			8.7 cal/cm2	X	
SBC2031	Gray		X	X			8.7 cal/cm2		X
SBC2032	Navy		X	X			8.7 cal/cm2		X
SBC2033	Tan		X	X			8.7 cal/cm2		X
SBC2034	Red		X	X			8.7 cal/cm2		X
SBC2035	Ryl. Blue		X	X			8.7 cal/cm2		X